



**Research Office
Executive Summary
Initial CTE Course Enrollment and Course Completion Results
Spring 2007**

Purpose of the Study

The research office recently conducted an initial study into course completion rates (aka course success rates) in CTE courses. The highlights of the study are given below. Data that informed these bullet points is attached. This is a descriptive study designed to learn more about the nature of our relatively poor performance in CTE areas indicated in the ARCC report. The research office is looking forward to working with the instructional deans of these programs to design a follow-up study that explores this issue in more detail. Because of the context of the study, we used the ARCC terminology and methodology: more information about the methodology follows the results (as I am sure most of you are more interested in the results!). Many thanks to Brad Brazil for his work on this project!

Overview of CTE Course Enrollment and Course Completion Results

Enrollment (duplicated):

1. There was a minimal change in the age distribution of the Career-Technical Education (CTE) student population over the past two years. In particular, there was a slight decrease in the percentage of CTE students between the ages of 18-20 and a slight increase in the percentage of CTE between the ages of 25 -29.
2. There was a slight increase in the enrollment of female CTE students during the Fall 2006 semester that did not continue during the Spring 2007 semester.
3. There was a slight increase in the enrollment of white CTE students during the Fall 2006 semester that did not continue during the Spring 2007 semester.
4. Enrollment decreased last year in 33% of the CTE programs at the college and increased in 52% of the CTE programs.

Course Completion (aka Course Success):

5. The average course completion rates for students enrolled in CTE programs decreased during the 2006 - 07 academic year as compared to the 2005 – 06 academic year. Spring 2007 course completion rates were comparable to Fall 2006 course completion rates.
6. 28% of CRC's CTE programs (n = 12) had an overall course completion rate at or above the average of CRC's peer group (74.8%). These programs accounted for 27% of the duplicated CTE enrollments at the college.
7. Conversely, 72% of CRC's CTE (n = 30) programs had an overall course completion rate below the average of CRC's peer group (74.8%). These programs accounted for 73% of the duplicated CTE enrollments at the college.
8. Nearly 60% of the CTE programs (n = 24) **showed a decrease** in their course completion rates in the 2006-07 academic year compared to the prior academic year. These programs comprised 63.6% of the total CTE enrollments.
9. Over 45% of the CTE programs (19 out of 42) **showed a decrease of more than 5%** in their course completion rates in the 2006-07 academic year compared to the prior academic year. These programs comprised 41.6% of the total CTE enrollments.

10. Nearly 30% of the CTE programs (12 out of 42) **showed an increase** in the average course completion rate in the 2006-07 academic year compared to the prior academic year. These CTE programs comprised nearly 30% of the total CTE enrollment during the past two academic years.
11. Nearly 10% of the CTE programs (8 out of 42) **showed in increase of over 5%** in their course completion rate in the 2006-07 academic year compared to the prior academic year. These CTE programs comprised 21.1% of the total CTE enrollment during the past two academic years.

The Vocational Education courses were selected as follows:

SAM Codes, C or D; Credit Courses; "Special Admit" students excluded from the analyses.

The analyses involve DUPLICATED enrollment as that is what informs the overall course success rates used in the ARCC report.

In terms of UNDUPLICATED headcount, there were 10,042 unduplicated students who enrolled in one or more Voc-ed courses during these two academic years.

In terms of UNDUPLICATED headcount by SEMESTER, the UNDUPLICATED HEADCOUNTS are as follows:

Fall 2005	3626
Spring 2006	3549
Fall 2006	3736
Spring 2007	3466

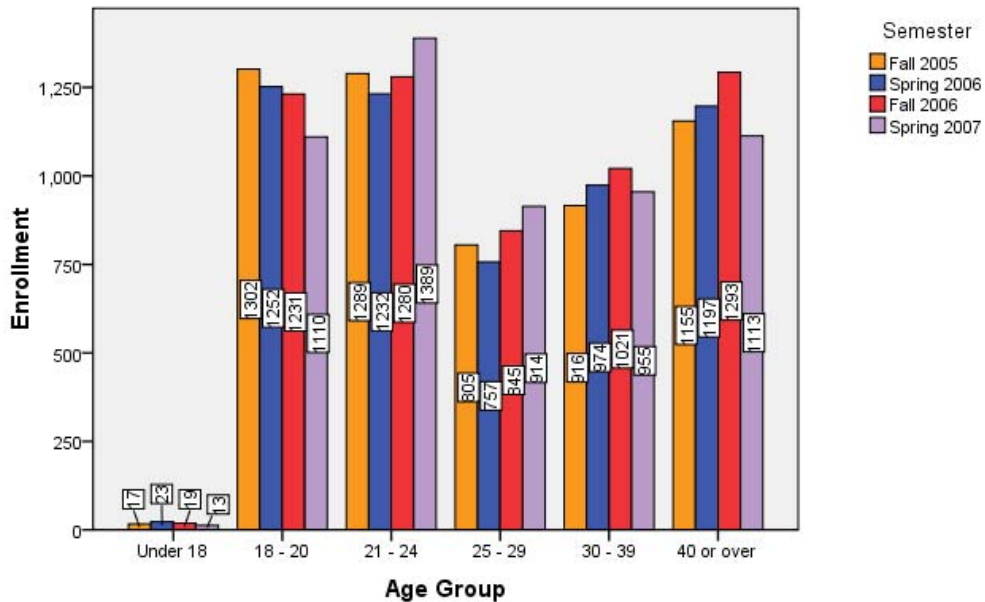
Voc-Ed Course Analysis (2005/06 - 2006/07)

Voc-Ed Duplicated Enrollment By Semester



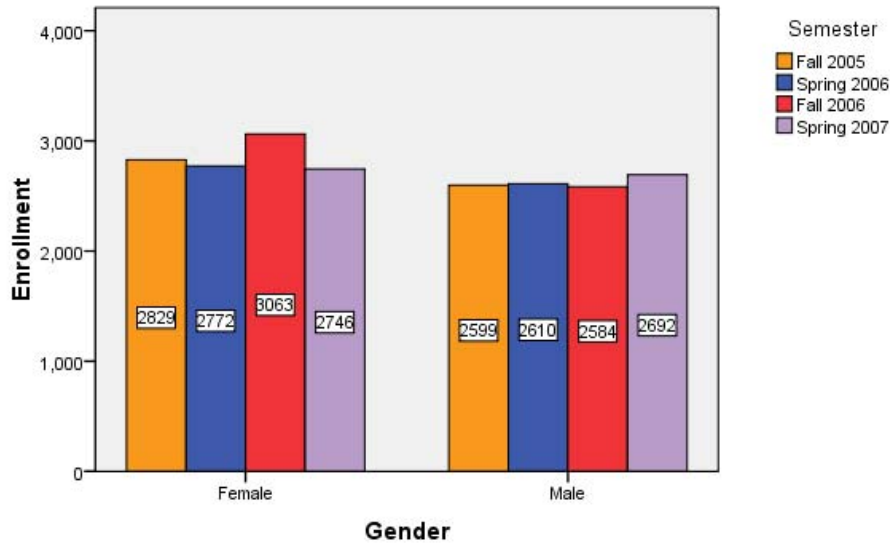
Voc-Ed Course Analysis (2005/06 - 2006/07)

Analysis of Duplicated Enrollment By Age Group



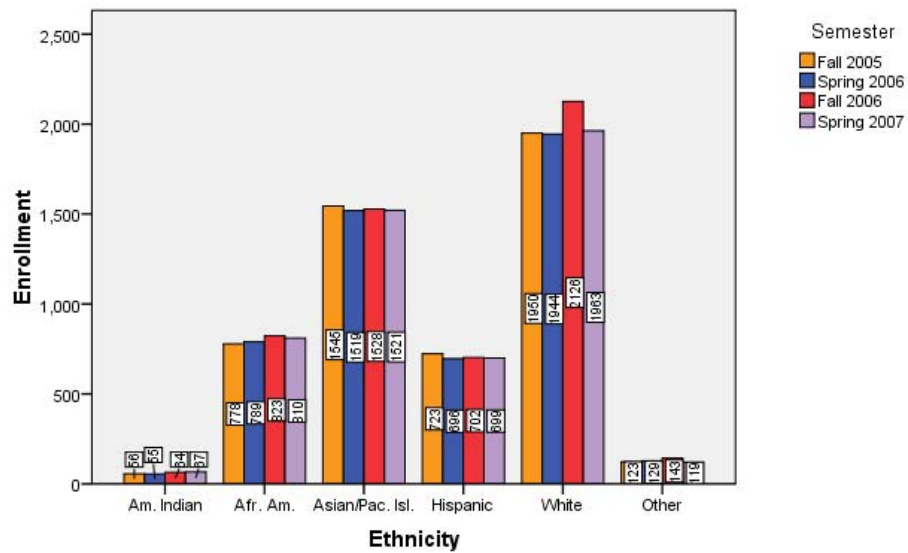
Voc-Ed Course Analysis (2005/06 - 2006/07)

Analysis of Duplicated Enrollment By Gender



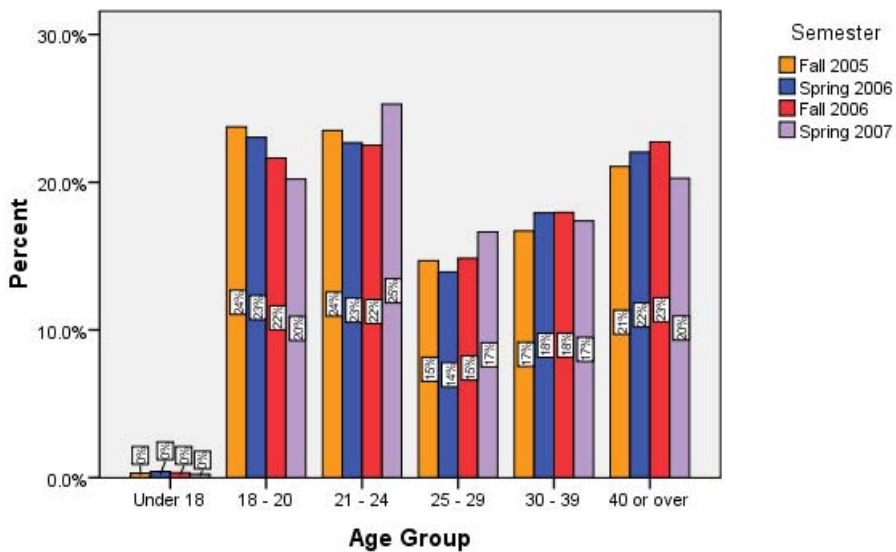
Voc-Ed Course Analysis (2005/06 - 2006/07)

Analysis of Duplicated Enrollment By Ethnic Group



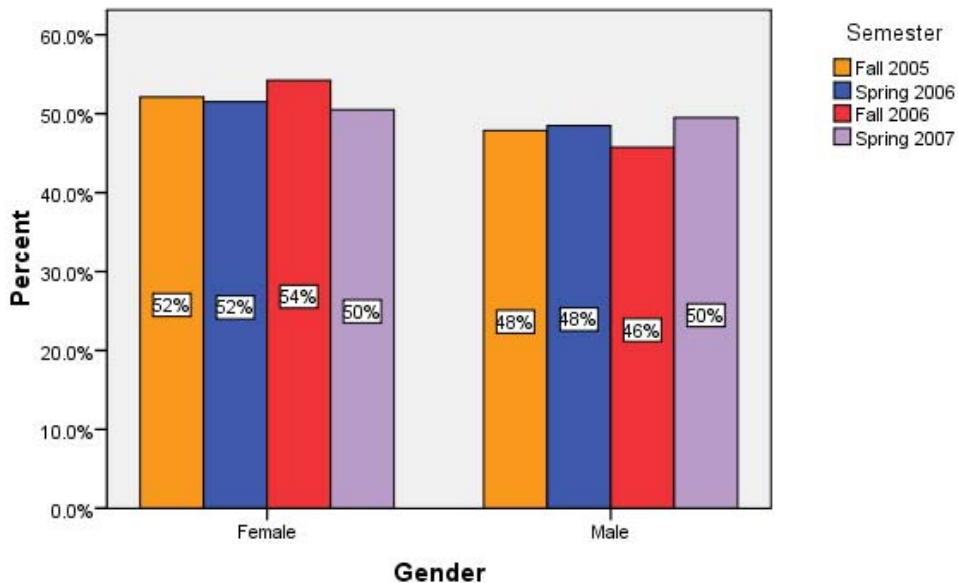
Voc-Ed Course Analysis (2005/06 - 2006/07)

Analysis of Duplicated Enrollment By Age Group



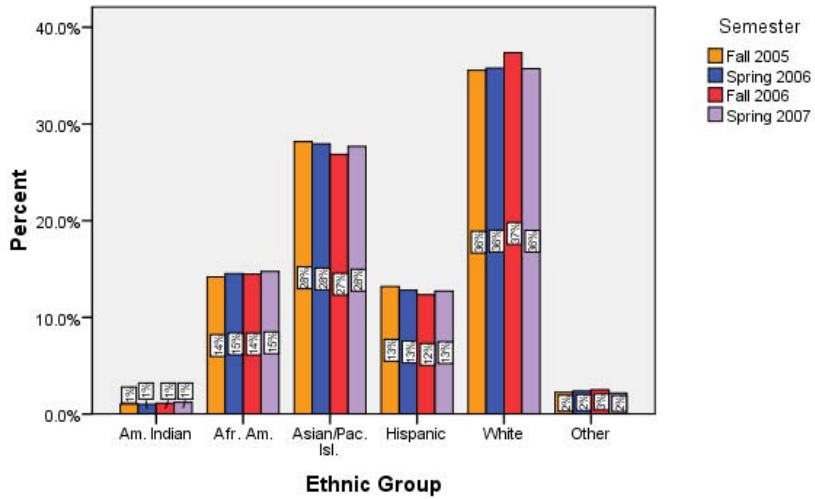
Voc-Ed Course Analysis (2005/06 - 2006/07)

Analysis of Duplicated Enrollment By Gender



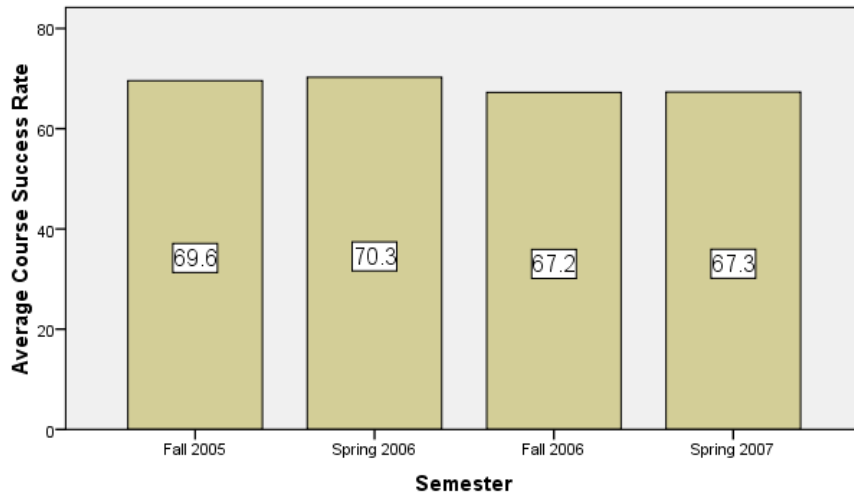
Voc-Ed Course Analysis (2005/06 - 2006/07)

Analysis of Duplicated Enrollment By Ethnic Group

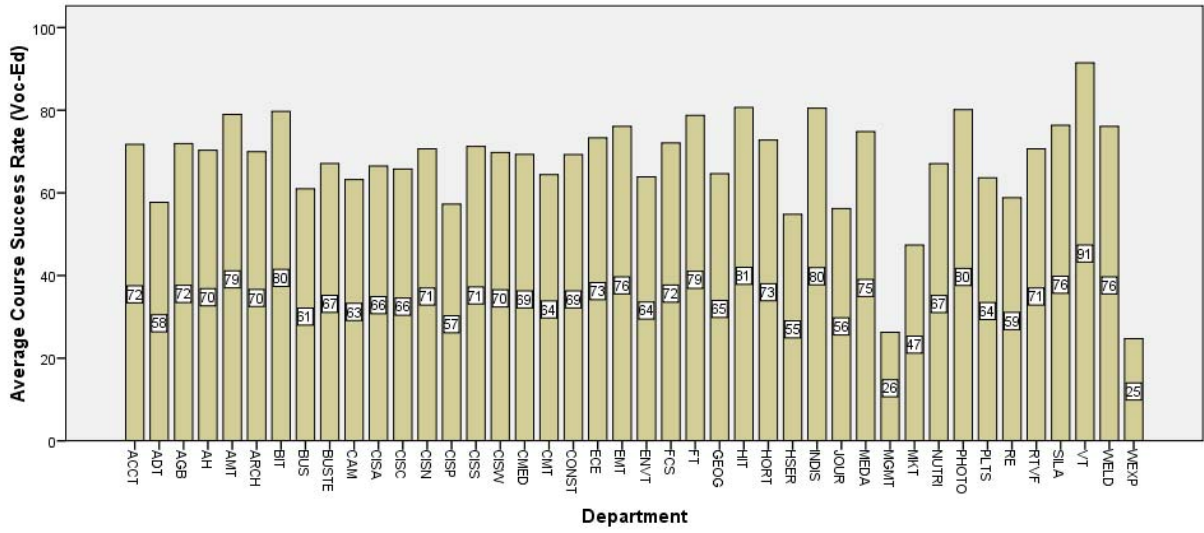


Voc-Ed Course Analysis (2005/06 - 2006/07)

Average Voc-Ed Course Success Rate By Semester



Average Course Success Rate of Voc-Ed Courses By Department (2005/06 through 2006/07)



Department	Average Course	Number of enrollments	Change in		Percent of total enrollments
	Success Rate		Success Rates	Change in enrollment	
VT	91.48	481	increase	increase	2.2%
HIT	80.68	678	decrease*	increase	3.1%
INDIS	80.49	123	static	static	0.6%
PHOTO	80.12	493	increase*	decrease	2.2%
BIT	79.71	759	increase	increase	3.4%
AMT	78.99	1866	increase*	static	8.4%
FT	78.73	724	static	increase	3.3%
SILA	76.36	258	increase	decrease	1.2%
WELD	76.09	184	increase*	increase	0.8%
EMT	76.09	46	decrease*	static	0.2%
MEDA	74.82	282	decrease*	increase	1.3%
ECE	73.31	1315	decrease*	increase	5.9%
HORT	72.77	213	static	decrease	1.0%
FCS	72.09	645	decrease*	decrease	2.9%
AGB	71.93	57	static	static	0.3%
ACCT	71.74	1210	decrease	decrease	5.5%
CISS	71.22	139	increase*	decrease	0.6%
RTVF	70.64	436	static	increase	2.0%
CISN	70.64	327	decrease*	increase	1.5%
AH	70.32	1139	increase*	static	5.2%
ARCH	69.96	809	decrease*	increase	3.7%
CISW	69.78	417	decrease*	increase	1.9%
CMED	69.31	518	decrease	decrease	2.3%
CONST	69.28	153	decrease*	decrease	0.7%
<hr/>					
BUSTE	67.12	73	increase*	increase	0.3%
NUTRI	67.07	167	static	increase	0.8%
CISA	66.47	1733	decrease	decrease	7.8%
CISC	65.77	1002	decrease*	decrease	4.5%
GEOG	64.65	99	increase	increase	0.4%
CMT	64.42	638	decrease*	increase	2.9%
ENVT	63.89	72	increase*	decrease	0.3%
PLTS	63.64	11	decrease*	increase**	0.0%
CAM	63.23	446	decrease*	increase	2.0%
BUS	60.98	856	decrease*	static	3.9%
RE	58.83	1042	decrease	decrease	4.7%
ADT	57.71	376	decrease	decrease	1.7%
CISP	57.27	1086	decrease*	increase	4.9%
JOUR	56.21	153	decrease*	increase	0.7%
HSER	54.81	208	decrease*	increase	0.9%
MKT	47.37	38	decrease**	decrease	0.2%
MGMT	26.25	739	increase*	increase	3.3%
WEXP	24.72	89	decrease*	increase	0.4%
Total	68.58	22102			100.0%

57% of Departments above Mean

60% of enrollments above Mean

CRC Average

43% of Departments below Mean

40% of enrollments above Mean